

# ONE ePayment Starter Kit

AS ONE, WE CAN.

# ONE

OCEAN NETWORK EXPRESS



[www.epayment.one-line.com](http://www.epayment.one-line.com)

# Table of Contents

- 01** Why ONE ePayment?
- 02** What is ONE ePayment?
- 03** How to use ONE ePayment?
- 04** What's next?

# Why ONE ePayment?

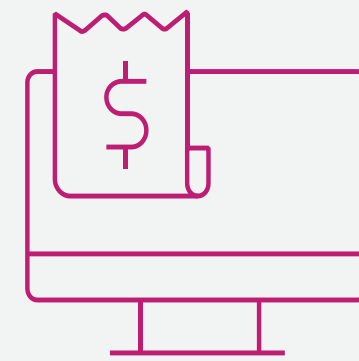
ePayment context and mission

# Why ONE ePayment?

In today's world, the pandemic reinforced major shifts in payments behavior: **declining cash usage, migration from in-store to online commerce, adoption of instant payments.** Cash payments declined by 16 percent globally in 2020<sup>1</sup>. Based on Drewry's latest white paper, large costs, inefficiencies, pain points and lack of automation results in the **total cost of invoicing and payment processing to the maritime industry of \$34.4 bn annually**<sup>2</sup>. Therefore, ONE introduces the ePayment portal with three missions:



Enjoy a convenient and secure payment experience




Experience a stress-free, instant payment for faster cargo release



Make payment anywhere and anytime

<sup>1</sup>: McKinsey, ["Global payments 2021: Transformation amid turbulent undercurrents"](#);

<sup>2</sup>: Drewry Maritime Research, ["Invoicing and payment processes in global container shipping: ready for disruption?"](#)



**To build a win-win relationship  
between ONE and customers**

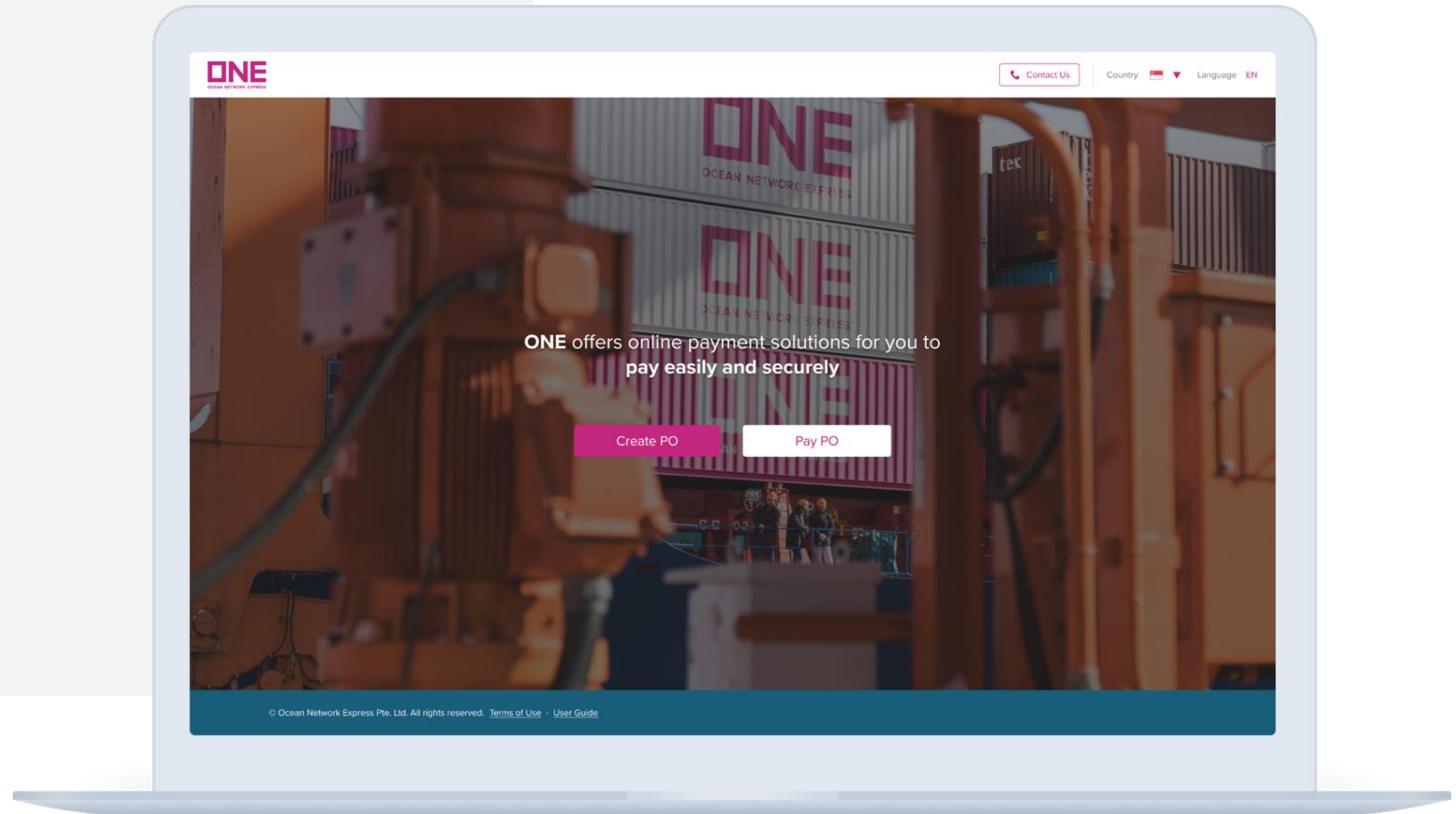
# What is ONE ePayment?

ePayment features

# ONE ePayment

ONE – Online payment solution to play it safe

- Convenient payment method
- Secure payment experience
- A few clicks is all it takes



» What is ONE ePayment?

# Create Purchase Order / Payment Registration

Simply create your Purchases Order with  
Bills of Lading or Invoices

ONE  
OCEAN NETWORK EXPRESS

Contact Us

Country Language EN

### Let's create your PO

Company name: ABC Company (Max length 200 characters)

Email address: abc@company.com (Ex: aaa@example.com)

Contact number: +65 123456789012 (Max length is 12 digits)

[Download Template](#) [Batch Upload](#)

Bill of Lading No. or Invoice No. (Maximum 450 BLs per PO)	Currency	Amount	Remark
1. ONEY QURY000000001234	SGD	12,000.00	Payment of Ocean Freight and Surchages
2. ONEY QURY000000005678	SGD	4,500.00	Payment of Ocean Freight and Surchages
3. ONEY QURY000000009012	SGD	7,950.00	Payment of Ocean Freight and Surchages
4. ONEY QURY000000003456	SGD	9,000.00	Please input, if any
5. ONEY Please Input BL Number Or Invoice Number	SGD	Please input amount	Please input, if any

**Total Amount: SGD 33,450.00**  
(The total amount must not exceed SGD 200,000.00)

**RECEIVABLE OFFICE**  
(Payment will be made to below office)  
**SINGAPORE**  
Address: 2 Harbourfront Place, #06-01, SINGAPORE 098499

PO No.:  
(Automatically Generated)

[Save and Proceed to Pay](#) [Save and Email](#)

© Ocean Network Express Pte. Ltd. All rights reserved. [Terms of Use](#) - [User Guide](#)

» What is ONE  
ePayment?



# Pay Purchase Order / Payment Proceed

Few clicks are all it takes to pay multiple  
Purchase Order

The screenshot displays the 'Pay PO' interface on the ONE Ocean Network Express website. The interface includes a header with the ONE logo, a 'Contact Us' button, and options for Country and Language. The main content area features a table with the following data:

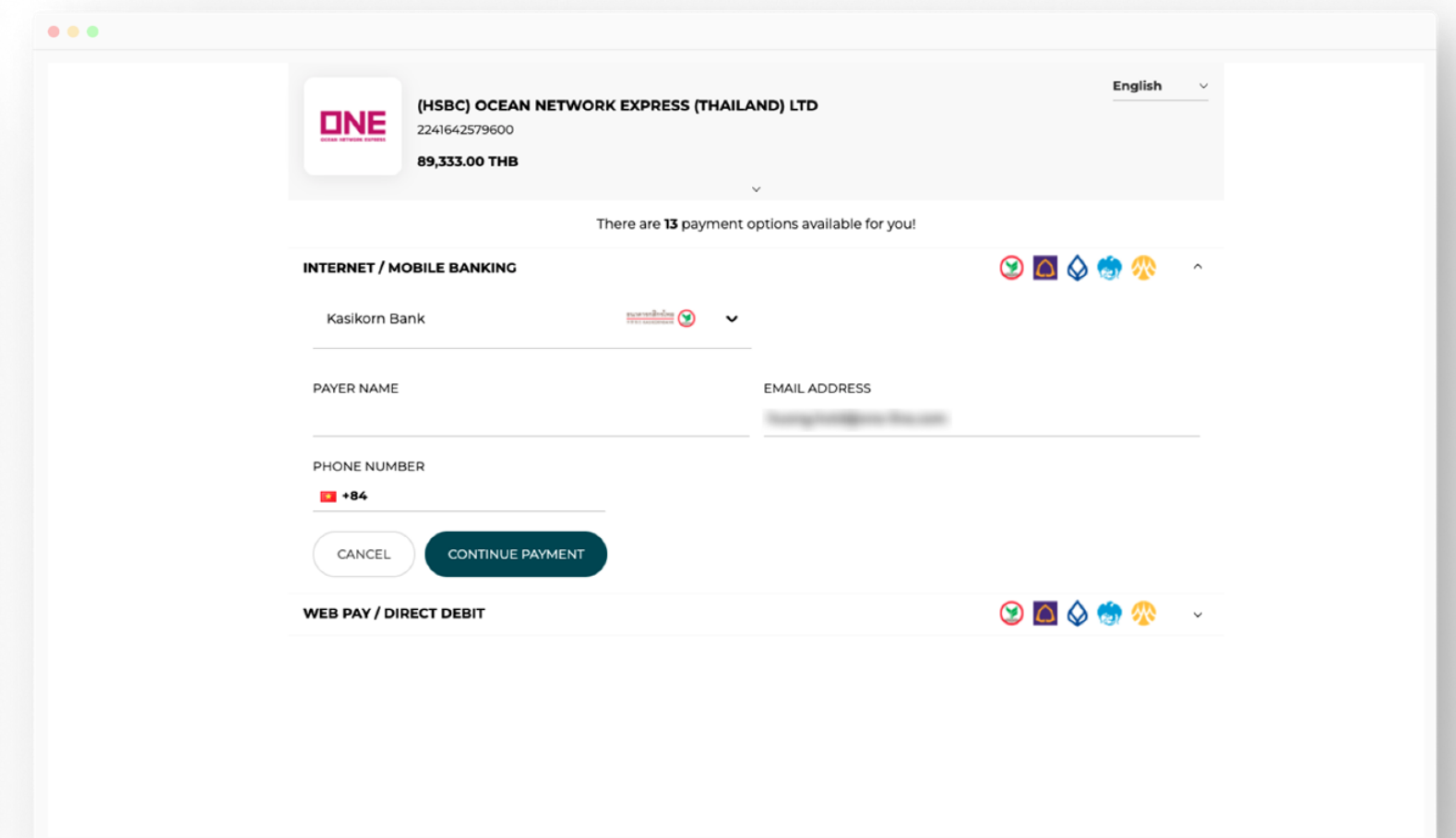
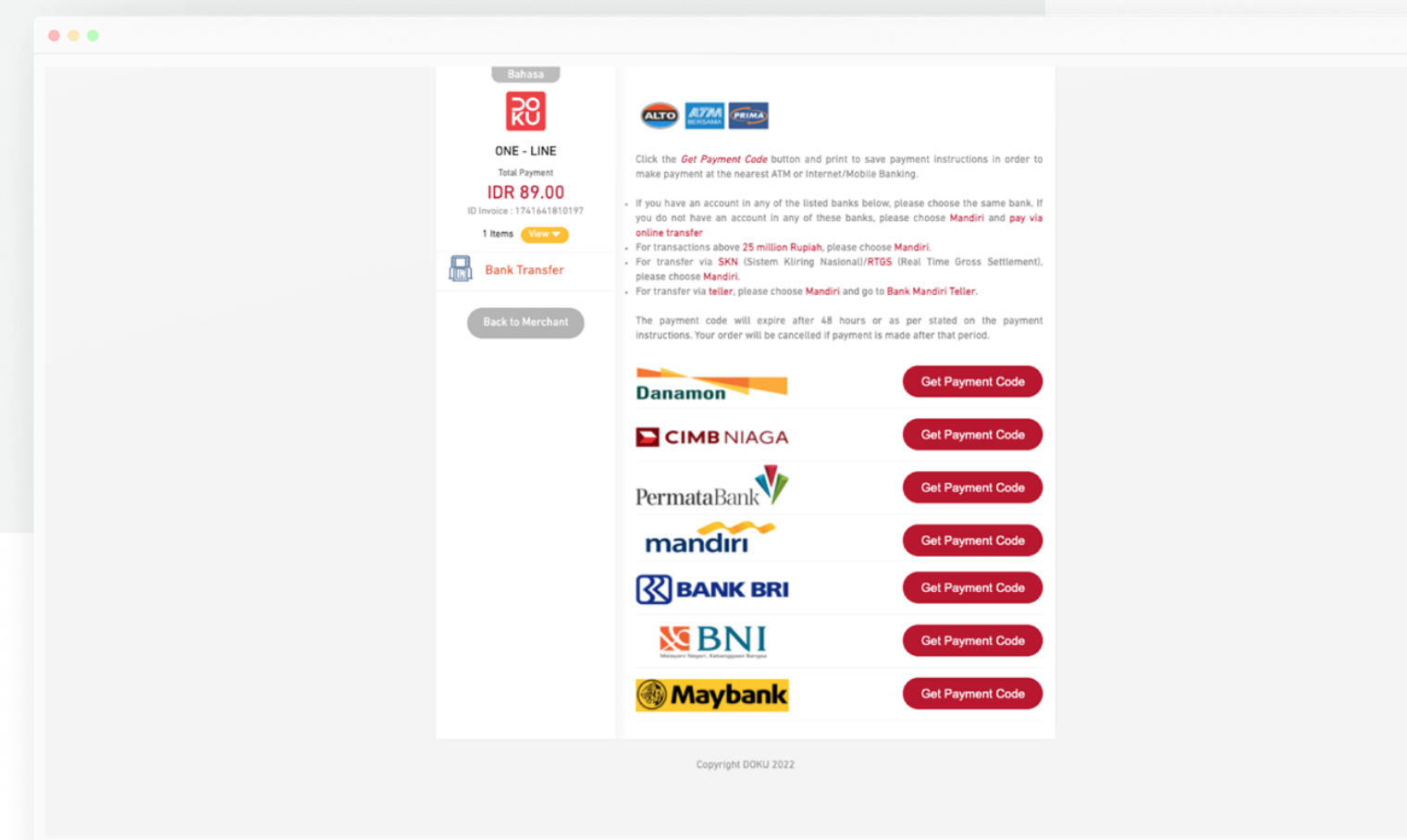
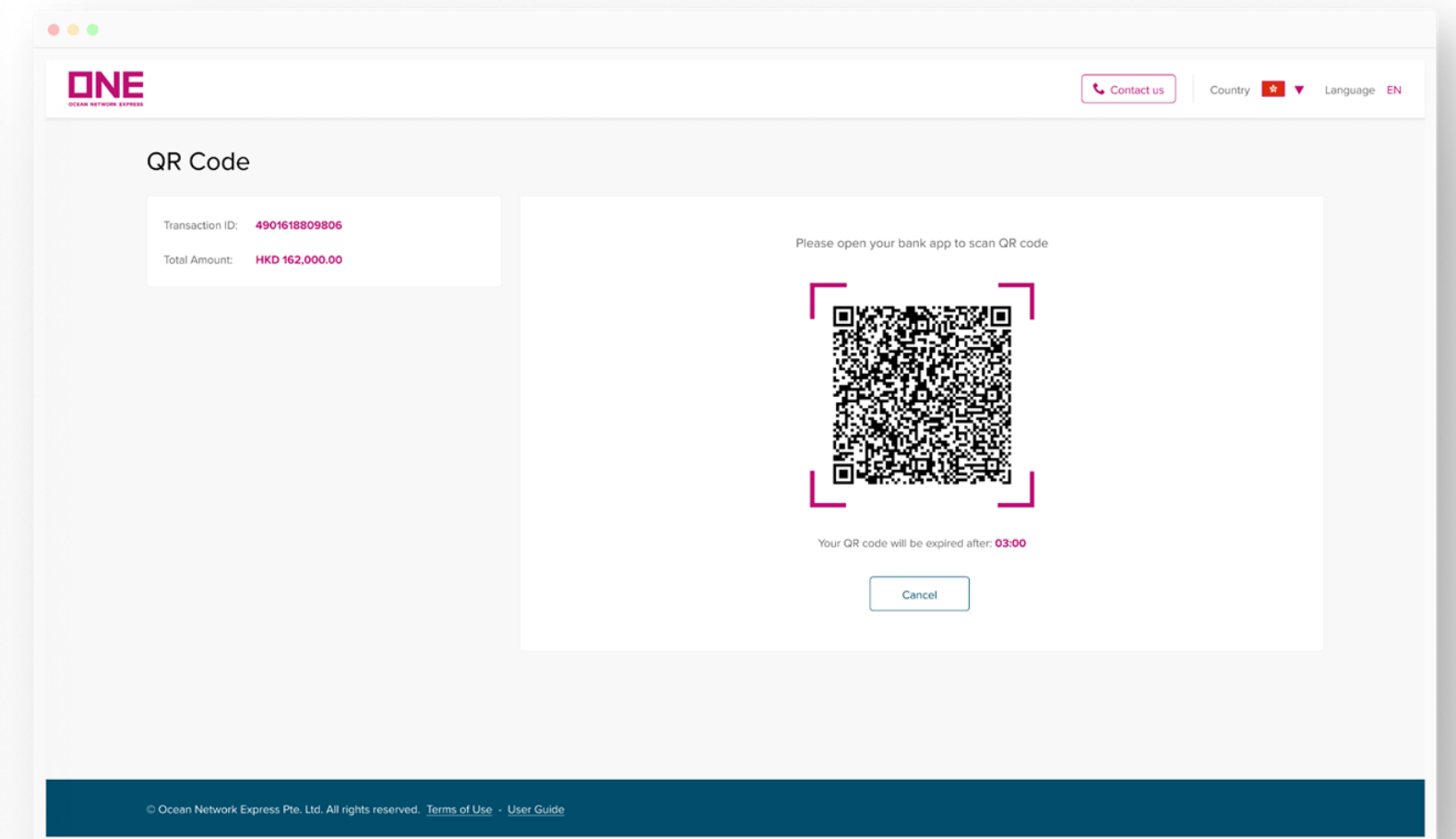
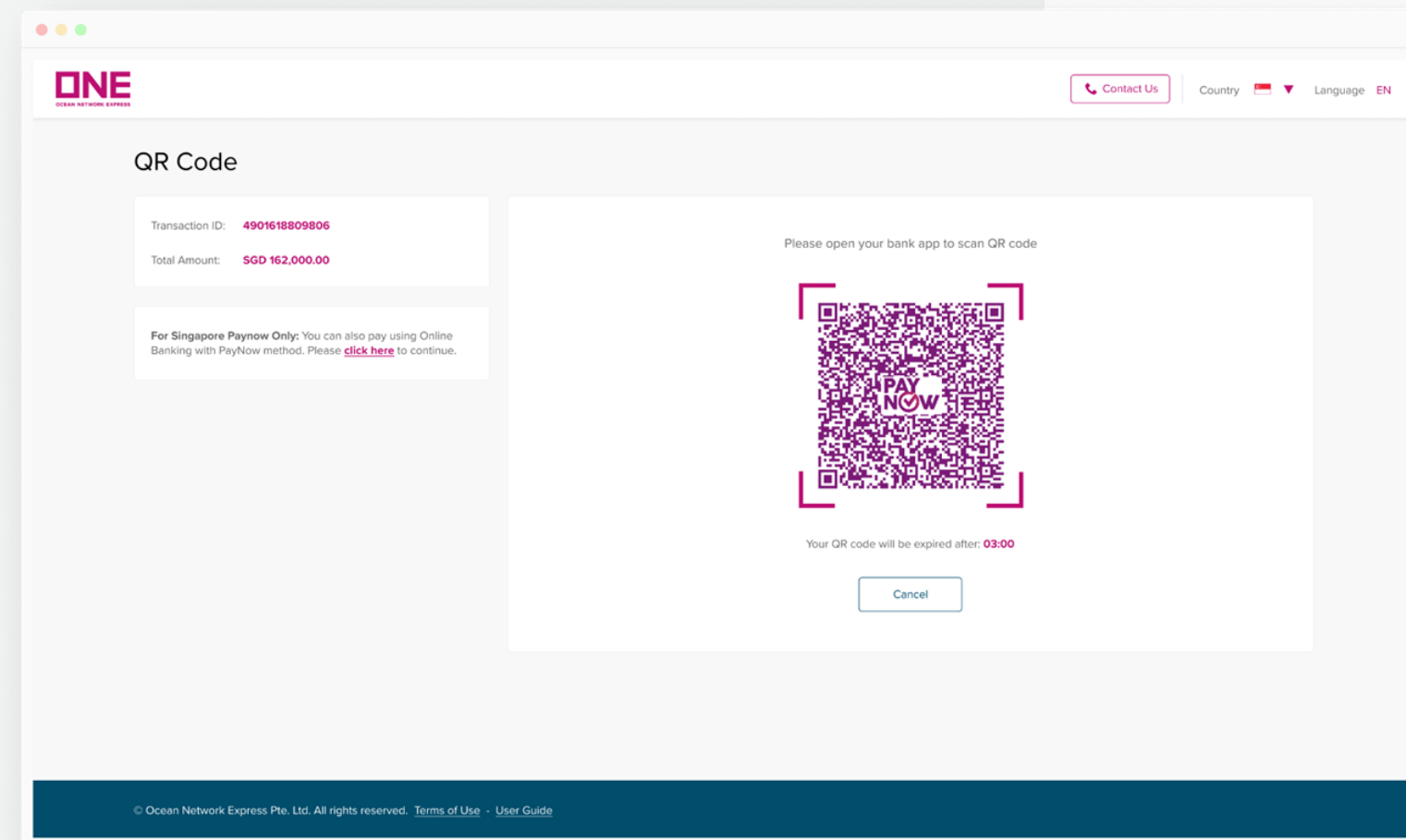
PO No.	Records	Currency	Amount	Company Name
1. SG2112040001	11	SGD	70,000.00	ABC Company
2. SG2112040836	1	SGD	1,000.00	ABC Company
3. SG2112040129	3	SGD	33,450.00	ABC Company
4. Please input PO No.	--	SGD	--	--
5. Please input PO No.	--	SGD	--	--

Below the table, there is a 'Total' indicator showing '15/450' records. At the bottom right, the total amount is displayed as 'Total Amount: SGD 104,450.00' with a note '(The total amount must not exceed SGD 200,000.00)'. A 'Proceed to Pay' button is located at the bottom right of the interface.

» What is ONE  
ePayment?

# Payment Gateway

Localization Payment Gateway with the B2B convenient payment methods

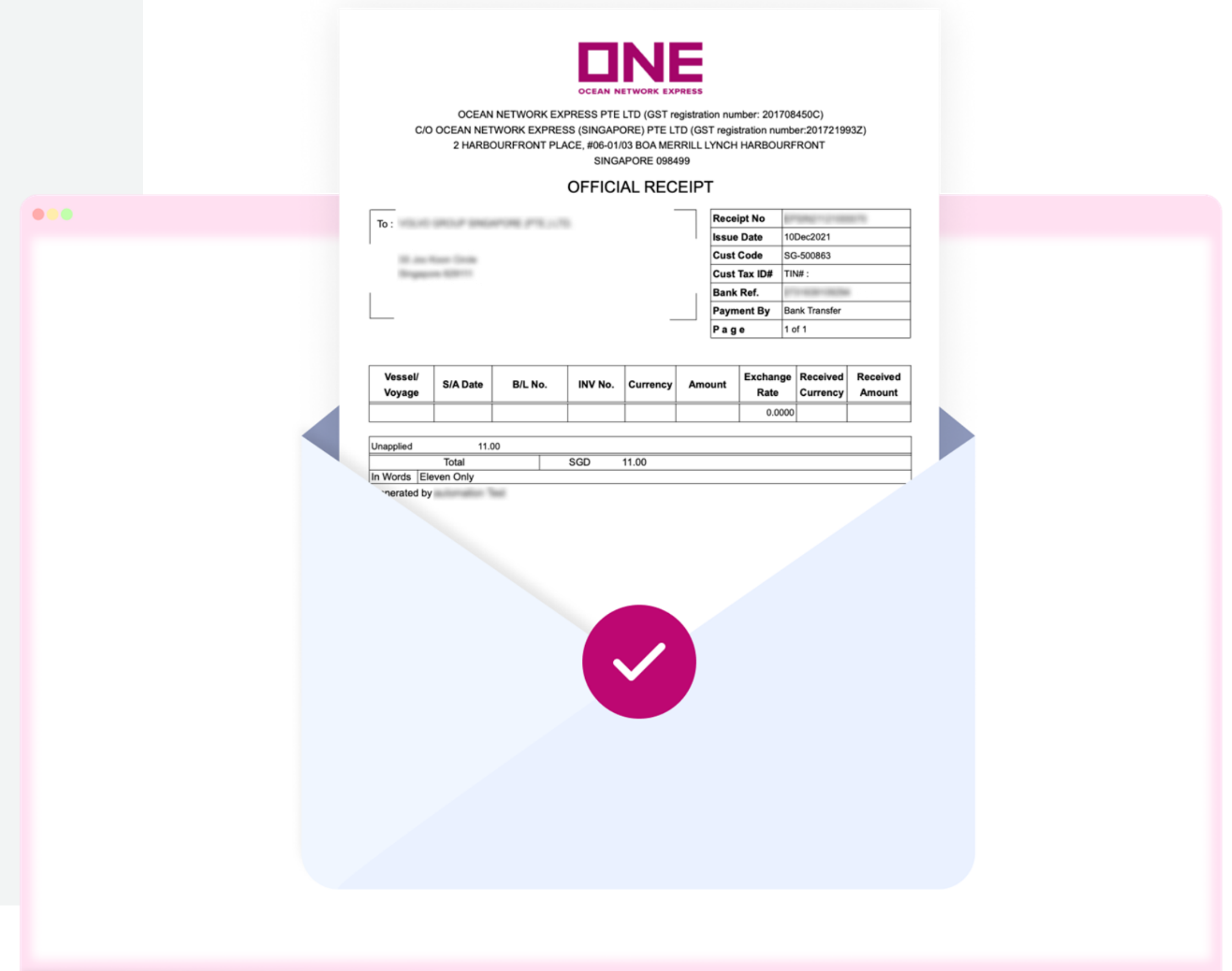


» What is ONE ePayment?

# Instant Payment Proof

It's automatically sent to your mailbox.

No longer waiting when we have the automated receipt generation!



» What is ONE  
ePayment?



# How to use ONE ePayment?

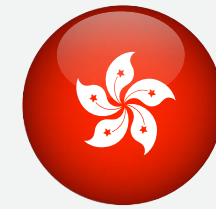
## ePayment User Guide

# How to use ONE ePayment?

To provide the best payment experience, we localize our ePayment portal to suit customers' behavior for specific markets. Therefore, please find the User Guide step-by-step for your country through our User Guide page. The ePayment portal has go-live in the following countries:



[Singapore](#)



[Hong Kong](#)



[Indonesia](#)



[Thailand](#)



# What's next?

## ePayment Road Map

# What's next?

*We are available in these countries now and will be expanding to other countries*



**Thank You**

[www.one-line.com](http://www.one-line.com)